

APA FORMAT

For Science and Social Science Subjects

Headings

- Your teacher may require headings within the body of your essay or report
- In APA style there are several levels of headings, depending on the simplicity of the work.
- If you need more levels than these samples, ask your librarian for help.

If you use one level of heading it should be bold, centered, with upper and lower case font.

Method

For two levels of headings, the second one is flush left and bold.

Method

Procedures

Figures and Tables

- In APA any type of illustration other than a table is a figure.
- A figure could be a chart, a graph, a photo or a drawing.
- These are placed after the references page.
- Each figure and table should have its own page.
- “*Figure*” is italicized and “*Table*” is not.
- Number the figure and table consecutively, e.g. *Figure 1*, *Figure 2* etc.
- Captions serve as a brief, but complete, explanation and as a title.
- Graphs should always include a legend that explains the symbols, abbreviations, and terminology used in the figure.

Environmental Concerns

#



Figure 1 Green Day at GCVI (2005)

Environmental Concerns

#

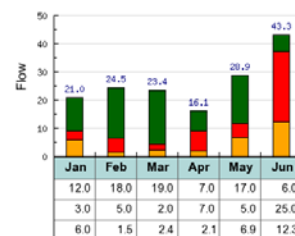


Table 1