

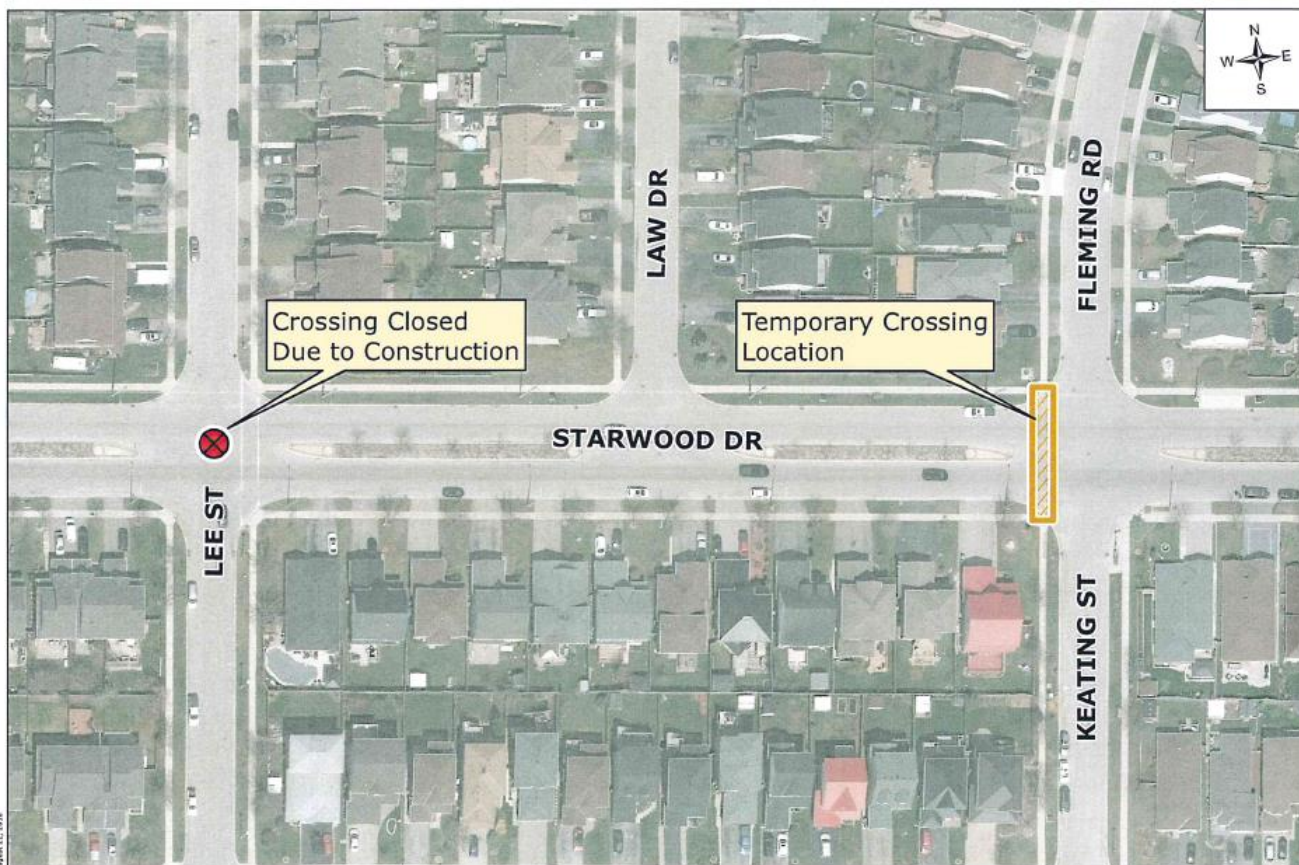
## Extended Temporary Adult School Crossing Guards Relocation.

*Starwood Drive at Lee Street to  
Starwood Drive at Keating Street and Fleming Road*

Guelph, Ont., October 11, 2018 – Extended end date for the adult crossing guards at Starwood Drive at Lee Street relocated east to the intersection at Starwood Drive at Keating Street and Fleming Road for construction. The extended temporary relocation will be for approximately two weeks, weather dependant. The road work is expected to be completed on Friday October 26<sup>th</sup>, 2018 and the guards will return to Lee Street on **Monday October 29<sup>th</sup>, 2018.**

If the construction is delayed, then a notice will be sent on Friday October 26<sup>th</sup>, 2018 with an updated ending date.

### School Crossing Guard Location Temporary Guard Location Starwood Drive and Fleming Road



For

### more information

Christine (Tina) Vettor, Crossing Guard Coordinator  
Transportation Services, Engineering and Capital Infrastructure Services  
City of Guelph  
519-822-1260 extension 2040  
[christine.vettor@guelph.ca](mailto:christine.vettor@guelph.ca)