

Morning Entrance - Reverse for Dismissal

- 1 CRITICAL AREAS - NEED A LOT OF PERSONNELS OPERATING IN THESE AREAS
- 2 CRITICAL AREAS - NEED A LOT OF PERSONNELS OPERATING IN THESE AREAS
- 3 CRITICAL AREAS - NEED A LOT OF PERSONNELS OPERATING IN THESE AREAS
- 4 CRITICAL AREAS - NEED A LOT OF PERSONNELS OPERATING IN THESE AREAS
- 5 CRITICAL AREAS - NEED A LOT OF PERSONNELS OPERATING IN THESE AREAS

Primary Entrance

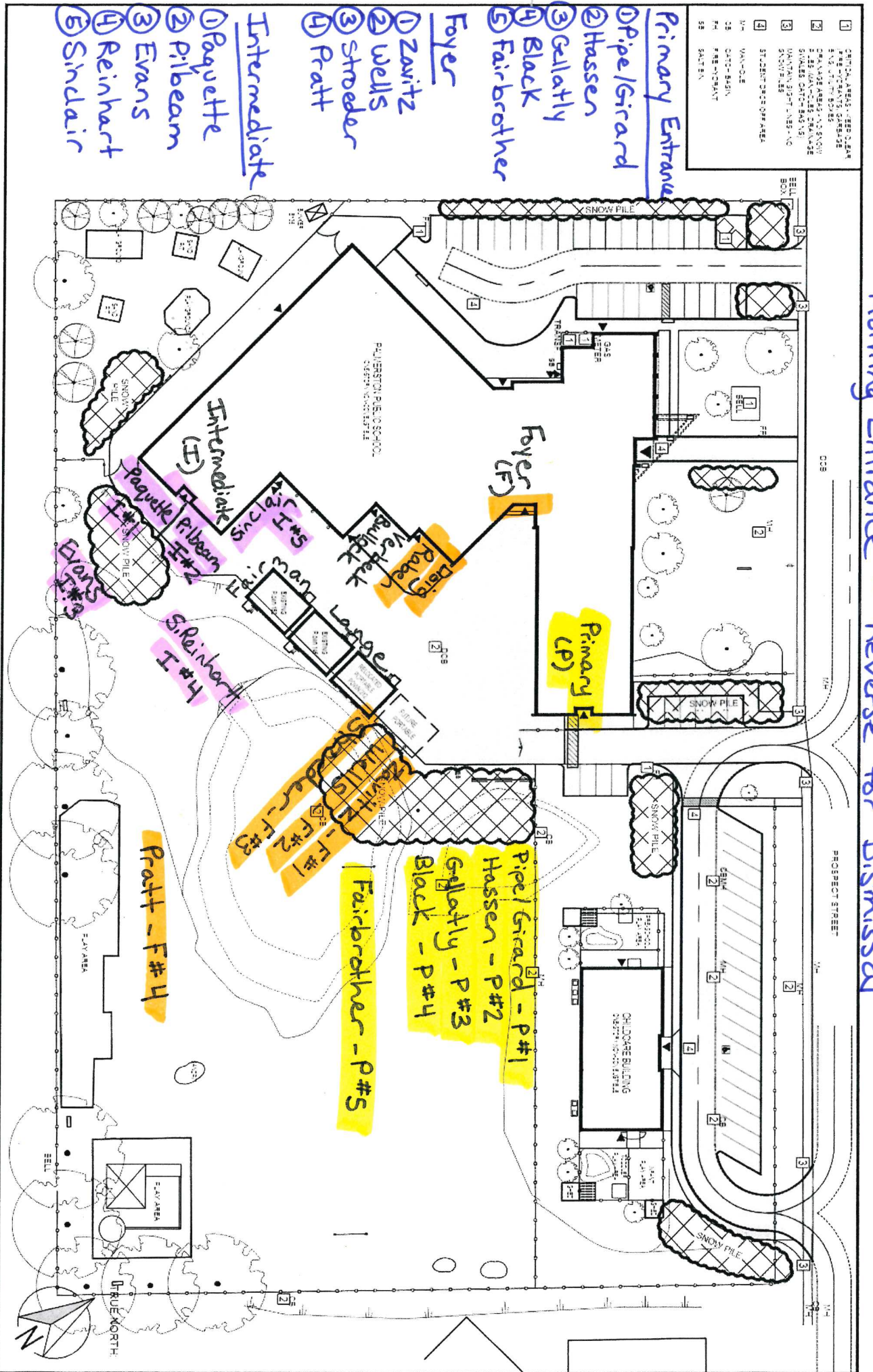
- 1 Pipe/Girard
- 2 Hassen
- 3 Gellatly
- 4 Black
- 5 Fairbrother

Foyer

- 1 Zawitz
- 2 Wells
- 3 Stroeder
- 4 Pratt

Intermediate

- 1 Paquette
- 2 Pilbeam
- 3 Evans
- 4 Reinhart
- 5 Sinclair



UPPER GRAND DISTRICT SCHOOL BOARD  
500 Victoria Road North, Quesnel, Ontario, M1E 6A2

**LEGEND**

- CONTRACTOR - SNOW & ICE CONTROL AREAS
- CONTRACTOR SNOW STOCK PILES
- CARETAKER SNOW CLEARING AREA

**NOTES**

- DO NOT USE HEAVY EQUIPMENT ON WALKWAYS, BIWAYS, STAIRS (18" & 12" WALKWAYS) AND SIDEWALKS
- TRAFFIC SNOW PILES MAX HEIGHT 48 FEET
- CARETAKER RESPONSIBLE FOR CLEARING ENTRANCES EXITS TO AND FROM CAMPUSES
- NO SNOW PILES AGAINST ANY FENCES

**DRAWING TITLE:** SITE PLAN WINTER SNOW CLEARING MAP

**SCHOOL:** PALMERSTON PUBLIC SCHOOL  
500 PROSPECT STREET  
PALMERSTON ONT. N0G 2P0

No.	DATE	REVISION
1	07/05/2019	DRAWING REVISED

SCALE: 1:900  
DRAWING No: A-1011b