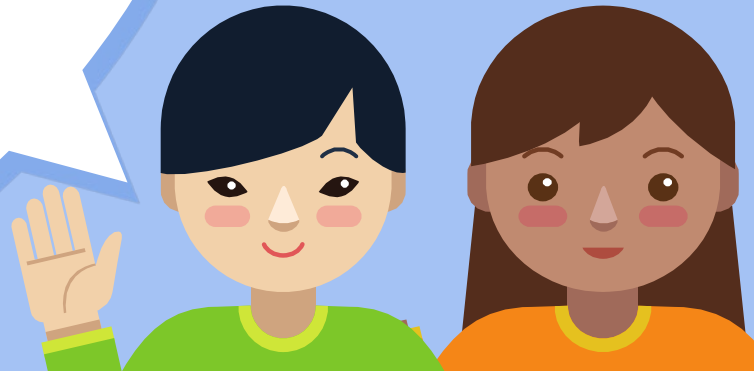




# ESL in the Upper Grand District School Board



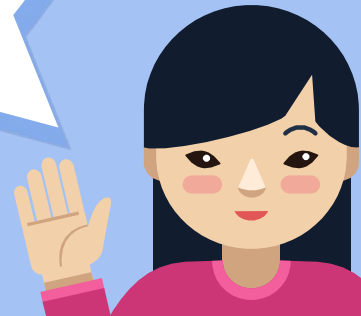
# ESL Students in Upper Grand DSB

- × Over 37 Languages spoken
- × Canadian born English Language Learners
- × English Language learners new to Canada
- × Some of our learners have had no schooling or interrupted schooling



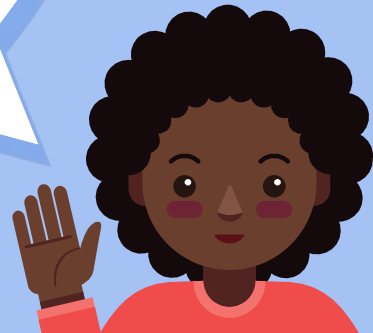
## Welcoming Families to our Board

- × Each school has a welcoming process in place
- × The elementary ESL resource teacher will be contacted and will greet the student/family
- × A SWIS worker may also support this process.
- × Students are placed in age-appropriate classrooms



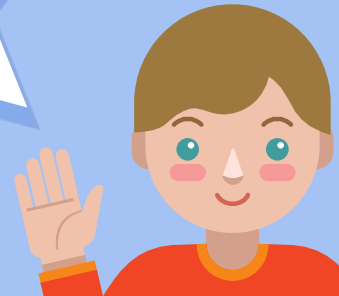
## Settlement Workers in Schools (SWS)

- × Make a connection between families and Immigrant Services
- × Arrange for translations and interpreters (e.g. for interviews, conversations with staff)
- × Connect families to community services
- × Support students in their transition to the local school system



## Settlement Workers in Schools (SWMS)

- × Support families in finding work and filling out applications
- × Help the family find housing
- × Find supports so that families can start the process of becoming Canadian Citizens
- × Run workshops for parents and youth



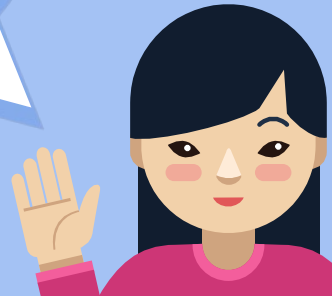
## Welcoming Families to Westwood

- × Welcome and tour of the school by admin and ESL teacher
- × Children and parents meet the classroom teacher and support staff
- × Arrangements made for translation available on site using interpreters and/or technology
- × Materials available for families



## Settlement Workers at Westwood

- × Workers assigned to schools
- × Office hours occur at the school
- × Parent meetings
- × Consent required by families to initiate contact with SWIS
- × Links to community resources and programs



# The Elementary ESL Program

- × 11 ESL Resource Teachers
- × 3 Educational Assistants
  - × 2 teachers and 1 EA work with the Remote School
- × Support students inside the classroom
- × Gather small groups of students with similar needs/individuals
- × Support classroom teachers







# The Elementary ESL Program

Support students English language growth

- × Increase vocabulary, grammar knowledge
- × Support use of English language in different contexts

Support learning in subject areas

- × Specific subject vocabulary
- × Alternate ways of accessing knowledge (e.g. in first language)



# The Elementary ESL Program

Support students in transitioning to the Canadian school culture

- × Basic school and classroom rules and routines
- × Seasons in Canada
- × Discuss Canadian and their own culture
- × Idioms and Canadian English Language usage



# STEP Assessment

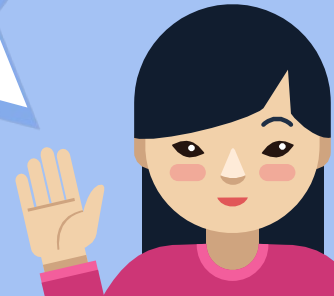
- × The ESL resource teacher will do an initial assessment of the student's English Language skills
- × Continuum of language proficiency in 6 steps for:
  - × Oral language
  - × Reading
  - × Writing



# Elementary STEP Assessment

Initial Assessment allows teachers to:

- × develop a student profile
- × provide a starting point for instruction
- × support programming.



# Elementary STEP Assessment

Ongoing Assessment allows teachers to:

- × support planning and programming decisions for individual students
- × select appropriate resources
- × identify possible special learning needs
- × track language proficiency and literacy development over time



# Tracking Growth: Digital Portfolios in Elementary Schools

- × We have put our STEP tracking documents online as digital portfolios
- × Each teacher is given access to a folder in our UGcloud
- × Inside the folder they will find a STEP digital portfolio for each of their ESL students



# Tracking Growth: Digital Portfolios in Elementary Schools

- × Classroom teachers and ESL resource teachers can add information to the portfolio
- × The portfolios move with the student as they progress through the grades
- × The classroom and ESL teachers can use the portfolio to set individual goals for the student



# Online Portfolio Example

## ESL Digital Portfolio SUMMARY

Student Name:	School:
Languages Spoken:	Date of Entry/Born in Canada (BIC):
IEP: Y/N?	ESL / ELD:

Grade	Highlighter Colour	Classroom Teacher	Additional Notes (i.e. attendance, additional concerns, other notes):
1	text		
2	text		
3	text		
4	text		
5	text		
6	text		
7	text		
8	text		

### STEP Summary: (highlight the highest STEP that has been fully mastered)

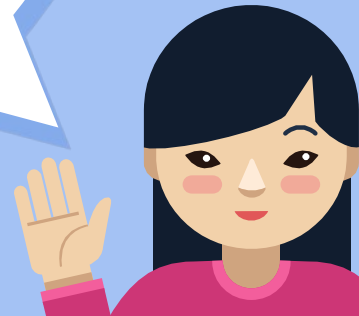
Oral STEP	W1	1	2	3	4	5	6	<b>Note about the OLBs:</b> <i>A descriptor is highlighted when the student consistently demonstrates the skill independently.</i>
Reading STEP	W1	1	2	3	4	5	6	
Writing STEP	W1	1	2	3	4	5	6	





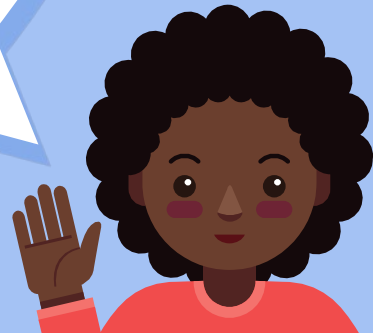
## Secondary Programming

- × Students can learn English and take the courses they need to get their high school diploma at the same time
- × English skills will develop over the 4 years of secondary school
- × Staff support for students



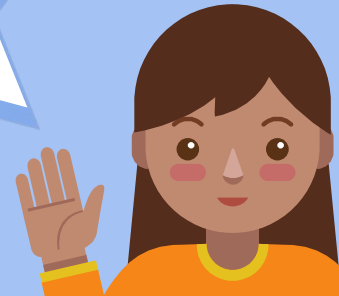
## The ESL Program at John F. Ross

- × Students take 2 ESI or ELD courses each year, one per semester
- × Students will be supported in choosing courses that fit their English Language proficiency
- × ELD courses are also offered for students who have had limited or no prior schooling before coming to Canada.



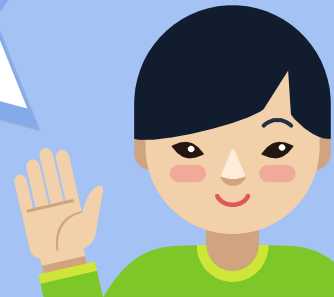
## The ESL Program at John F. Ross

- × ESL courses are offered in content areas
- × Students do not have to take all of their credits in ESL courses.



# The ESL Programming in other Secondary schools

- × ESL courses are offered in English
- × Students can choose to take an ESL reading course instead of the French Language course.



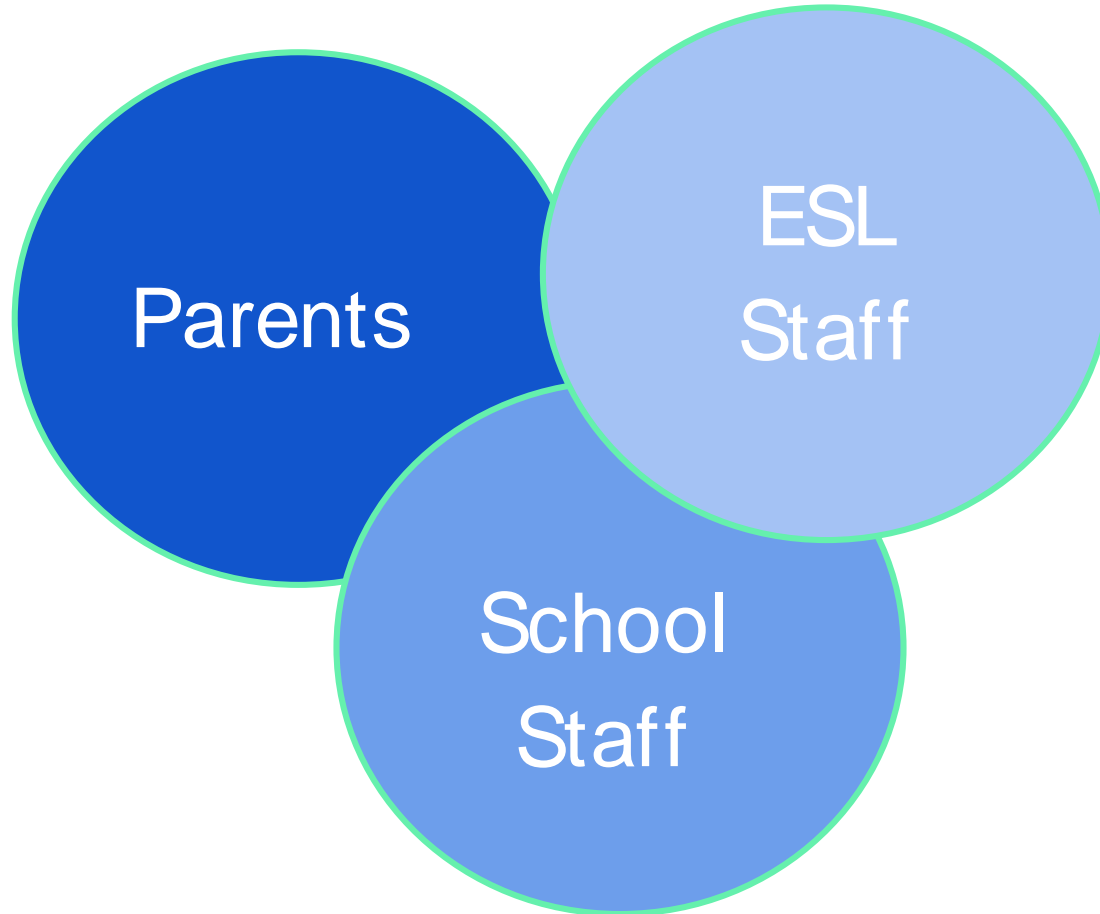
## Transitioning to Secondary School

- × Grade 8 students are supported through a process of transitioning to secondary school by the elementary ESL resource teacher and ESL teacher at the secondary school
- × Students and parents are supported in course selection and understanding the secondary program





# Supporting Student Success





Questions?

